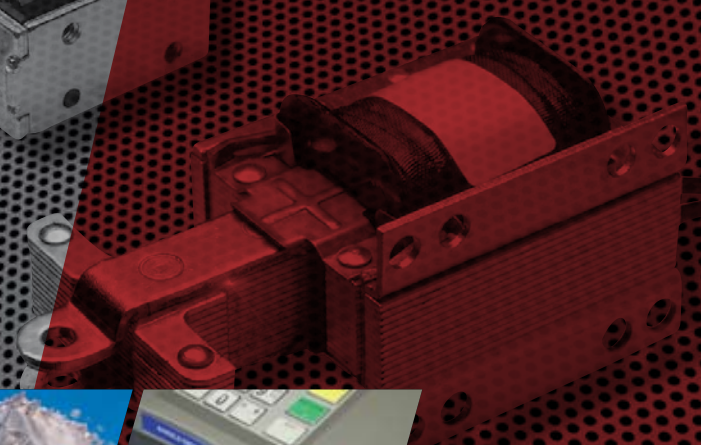
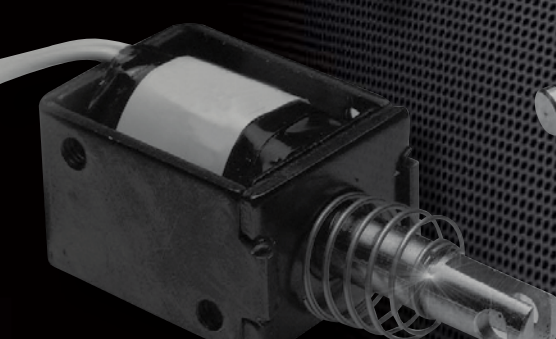
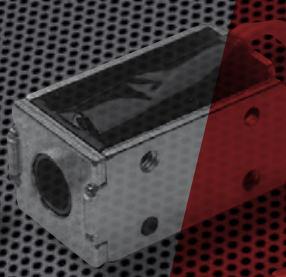
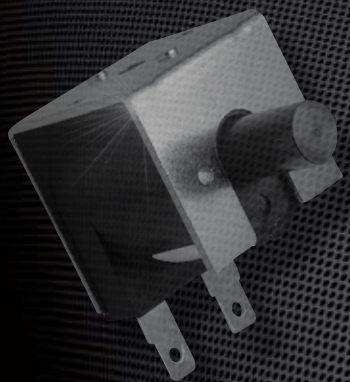


# STANDARD AND CUSTOM SOLENOIDS FOR OEM APPLICATIONS



*Penny+Giles*  
A Curtiss-Wright Company

# THE COMPANY

Penny+Giles are the UK's leading supplier of solenoids - with manufacturing facilities in both Europe and Asia. Our solenoid business was originally founded in 1918, and was more recently known as the Mechatronics brand. The business has earned its reputation by designing and manufacturing reliable, cost-effective solutions across a wide variety of applications. These include automotive, safety and security, MV switchgear, coin handling, vending, fluid power and business machines.

## SOLUTION DEVELOPMENT

The engineers at Penny+Giles specialise in providing customised solutions to suit any application. They are on hand to use their decades of experience to advise on the correct selection. In addition, Penny+Giles has undertaken Electro-Mechanical assembly work for more than 30 years; from complex mechanical assemblies to PCB's and simple connectors.

### Quality

Penny+Giles quality systems are accredited to BS EN ISO9001:2008. Our commitment to quality is the foundation of our business, ensuring the reliability of our products from initial design to final dispatch.

### China

We now manufacture an increasing amount of our high volume solenoid products at our facility in Zhuhai, China - although all product design, modeling, sampling and tool design is completed in the United Kingdom.

### Customer Service

Our speed of response extends to deliveries too, with world class levels of service to meet your expectations. With worldwide representation and strategic alliances in several major countries, Penny+Giles is truly an international company.

### Product Range

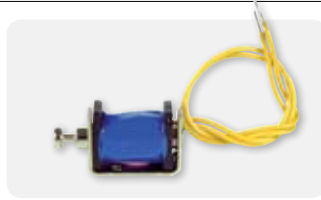
The next page shows a small selection of our standard product range. As the UK's leading linear motion solutions provider, our experience suggests that you may need a variant based on one of our standards or a fully customised design. In either event we offer cost effective customised solutions as standard.



## OPEN FRAME

### GC0416

Pull or thrust types available  
Optional voltage ratings  
16mm x 8mm x 12mm  
100% power 0.8 watts dc  
0.03N force at 1mm stroke



### GD0420

Pull or thrust types available  
Optional voltage ratings  
20mm x 11mm x 10mm  
100% power 1.1 watts dc  
0.2N force at 1mm stroke



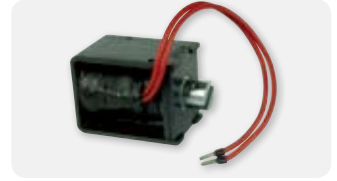
### MD0837

Pull or thrust types available  
AC option available  
37mm x 26mm x 21mm  
100% power 5.2 watts dc  
1.0N force at 6mm stroke



### MD1764

Pull or thrust types available  
Bearing mounted version available  
64mm x 41mm x 48mm  
100% power 19 watts dc  
3.0N force at 12mm stroke



## TUBULAR

### MT0525

Thrust type operation  
Optional voltage ratings  
Ø 13mm x 25mm  
100% power 2 watts dc  
0.2N force at 4mm stroke



### MT26110 (Model M60)

Pull or thrust types available  
AC option available  
Ø 60mm x 114mm  
100% power 23 watts dc  
6N force at 30mm stroke



### GT1152

Pull or thrust type operation  
AC option available  
Ø 25mm x 52mm  
100% power 3.8 watts dc  
2.0N force at 4mm stroke



### GT34102 (Model CS80)

Pull or thrust types available  
Bellows and feet available  
Ø 80mm x 102mm  
100% power 37 watts dc  
37N force at 30mm stroke



## AC LAMINATED

### ML1441 (Model TT2)

High force, small size  
Flying leads or tags  
41mm x 14mm x 37mm  
100% power 9 watts ac  
4N force at 10mm stroke



### ML2566 (Model TT10)

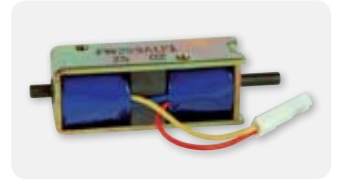
Flying leads or tags  
Optional voltage ratings  
66mm x 25mm x 75mm  
100% power 28 watts ac  
56N force at 20mm stroke



## LATCHING SOLENOIDS

### GK0641

Pull or thrust types available  
Bi-stable latching  
Optional voltage ratings  
41mm x 13mm x 16mm  
Long life characteristics



### GK1037

Pull or thrust types available  
Permanent magnet latching  
37mm x 20mm x 26mm  
6N force at 3mm stroke  
100% power at 4 watts dc



## SOLENOID VALVES

### MVSD298

Pneumatic solenoid valve  
Applications include ATM's & ABS  
DIN standard connections  
Long life  
2/3 port configuration



### GV0624

2 or 3 way  
2 way orifice 0.75mm  
3 way orifice 0.9mm  
0.4mm stroke  
24mm x 20mm x 16mm



## OTHER

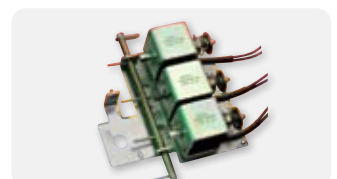
### HOLDING MAGNETS

AC option available  
Optional connectors  
IP65 protected  
Ø35 to 95mm  
Holding force 150 to 1200N



### SPECIAL SOLENOIDS

Interlocks  
Shotbolt locks  
Value-added assemblies  
Fully customized designs





[www.pennyandgiles.com](http://www.pennyandgiles.com)

**Penny+Giles**

Solenoids, joysticks and position sensors for commercial and industrial applications.

Unit 50, Innovation House  
South Church Enterprise Park  
Bishop Auckland  
County Durham  
DL14 6XB  
United Kingdom  
+44 (0) 1388 771200  
+44 (0) 1388 772490 Fax  
solenoids@pennyandgiles.com

665 North Baldwin Park Boulevard  
City of Industry, CA 91746  
USA  
+1 626 480 2150  
+1 626 369 6318 Fax  
us.sales@pennyandgiles.com

Straussenlettenstr. 7b  
85053 Ingolstadt  
Germany  
+49 (0) 841 885567-0  
+49 (0) 841 885567-67 Fax  
info@penny-giles.de

3-1-A, Xiandai Square,  
No 333 Xingpu Rd,  
Suzhou Industrial Park, 215126  
China  
+86 512 6287 3380  
+86 512 6287 3390 Fax  
sales@pennyandgiles.com.cn

The information contained in this brochure on product applications should be used by customers for guidance only. Penny+Giles Controls Ltd makes no warranty or representation in respect of product fitness or suitability for any particular design application, environment, or otherwise, except as may subsequently be agreed in a contract for the sale and purchase of products. Customers should therefore satisfy themselves of the actual performance requirements and subsequently the product's suitability for any particular design application and the environment in which the product is to be used.

Continual research and development may require change to products and specifications without prior notification.

All trademarks acknowledged.

© Penny+Giles Controls Ltd 2011

**Innovation In Motion**

