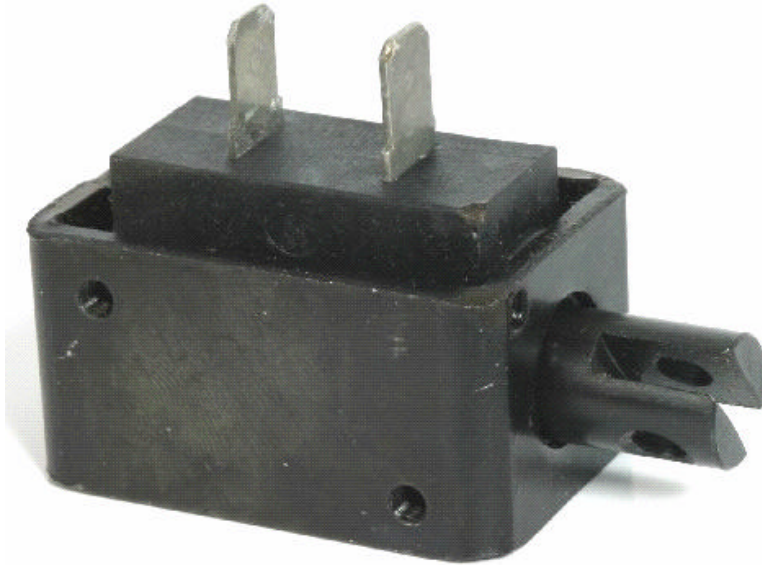


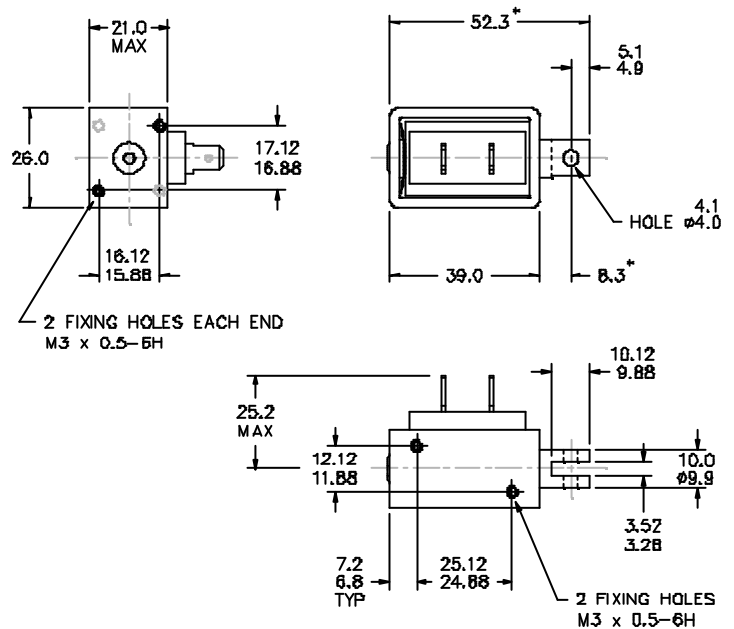
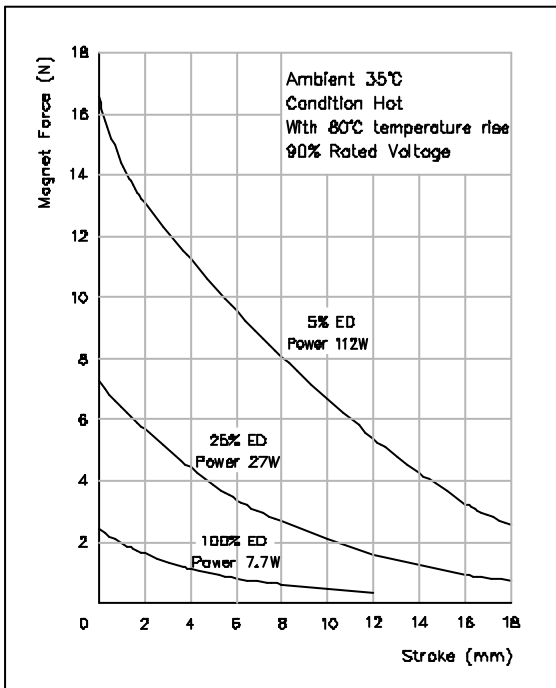
D-Frame Solenoid (Model D3)

MD1039



- Optional Thrust or Pull Type
- Customised Plunger Ends
- Flying Leads or Tags
- Optional Voltage Ratings
- Optional Connectors
- Customised Fixing Holes
- Optional Return Spring
- Alternative Plating Finishes
- Optional Anti-Impact Washer
- Optional Threaded End Stop

If plunger works with gravity:
stroke force = magnet force + plunger weight force.
If plunger works against gravity:
stroke force = magnet force - plunger weight force.



* DIMENSIONS WITH SOLENOID ENERGISED.
TOLERANCES (UNLESS STATED) $\pm 0.4\text{mm}$