

Pressure Sensor - EPT3200

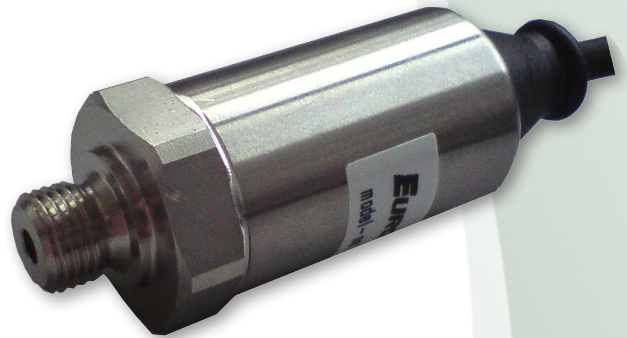


Eurosensor

- Pressure ranges down to 0..10 / 500 mbar
- High strength, rugged stainless steel design
- Competitively priced

The **EPT3200** offers the robust design with stainless steel housing of the EPT3100 but uses a silicon based sensitive measuring cell for low pressure applications from 10 mbar to 500mbar.

With additional EMI / RFI protection, low static and thermal errors and high resistance to shock and vibration as standard, the **EPT3200** assures trouble free operation at temperatures up to 85°C.



Specification

Performance		Electronics	
Accuracy	< +/-1.0% at RT	Excitation	5 VDC for 0.5 – 4.5 V output, 10 - 32 VDC for 0 - 5 V, 1 - 5 V, 4...20 mA output 12 - 32 VDC for 0 – 10V output
Stability (1 Year)	< ± 0.15 %	Output impedance	< 100 Ω
Overrange pressure	up to 2x rated pressure	Current consumption	< 10 mA
Burst pressure	up to 5x rated pressure	Reverse voltage protection	Yes
Pressure cycles	> 10 million	Mechanics	
Environment		Housing incl. wetted parts	Silicon, silicone glue, PA6.6 (Polyamid), NBR/Viton O-ring
Temperature	-20° to 85°C	Pressure port	see select table
Shock	1000 G, 11 msec., 1/2 Sine	Electrical connection	see select table
Vibration	25 G peak, 20 to 2000 Hz	Weight	ca. 60 g
Sealing	IP 66, optional IP69K		

Ordering Information

(Please use the characters in the chart below to construct your product code)

Sample Code: **EPT3200 - A - 00025 - B - 4 - A**

Series	Port Configuration	Pressure Range	Pressure Unit	Output Signal	Electrical Interface
EPT 3200	A - G 1/4" Male B - 1/4" NPT Male C - 1/8" NPT Male D - 7/16" -20 UNF Male E - 9/16" -18 UNF Male F - M14x1.5 Male G - 1/4" SAE Female H* - 3/8x24 UNF Male (Dash Size 3) M10 - M10 x 1	Please use code from table below	B - Gauge pressure V - Vacuum pressure	1 = 0 -10 V 2 = 4..20 mA 3 = 1..5 V 4 = 0..5 V 5 = 0.5..4.5 V - (with 5V supply voltage)	A - 600 mm cable B - Miniature EN175301-803-C connector C - Packard Metripac connector D - Standard EN175301-803-A connector F - M12x1 Round connector K** - Moulded cable

Custom options available on request

* Standard option
** Sealing IP69K

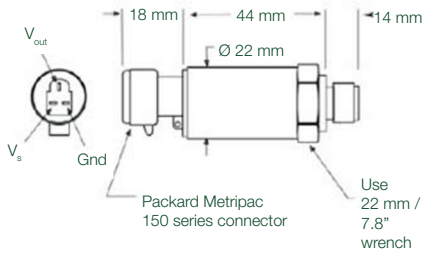
Pressure Range					
Bar	0.01	0.05	0.1	0.25	0.5
Order Code	00001	00005	00010	00025	00050

The EPT3200 series is backed by a 1 Year Warranty. The purchaser is responsible for compatibility of the media, functional adequacy and correct installation of the transmitter.

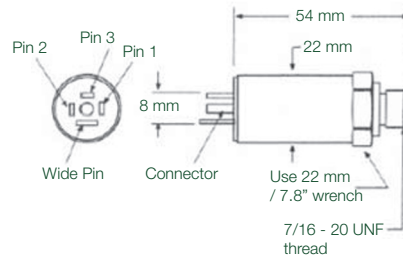


Dimensions

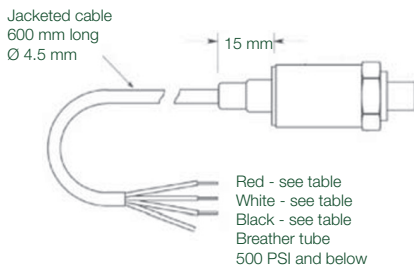
Packard Metripac connector






DIN EN 175301-803 connector



Cable assembly



Wiring

Type	Output	PIN 1	PIN 2	PIN 3	PIN 4
 DIN EN 175301- 803-A and C	0,5 - 4,5V , 1 - 5 V , 0 - 10 V	+ Supply	- Supply	Output +	-
	4..20mA	+ Supply	Current output -	N/A	-
 Round connector M12x1 A	0,5 - 4,5V , 1 - 5 V , 0 - 10 V	+ Supply	N/A	- Supply	Output +
	4..20mA	+ Supply	N/A	Current output -	N/A
 Packard Metripac	0,5 - 4,5V , 1 - 5 V , 0 - 10 V	- Supply	+ Supply	Output +	-
	4..20mA	Current output -	+ Supply	N/A	-
Cable assembly	0,5 - 4,5V , 1 - 5 V , 0 - 10 V	+ Supply	- Supply	Output +	-
	4..20mA	+ Supply	Current output -	N/A	-